

## Our Thanks



Burggemeinde  
Bern

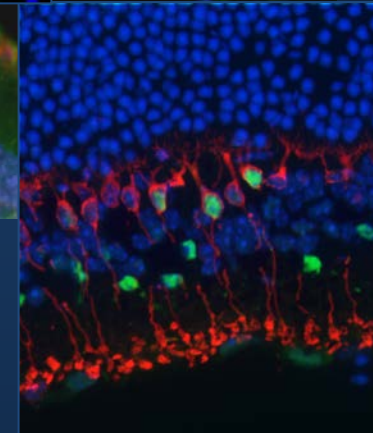
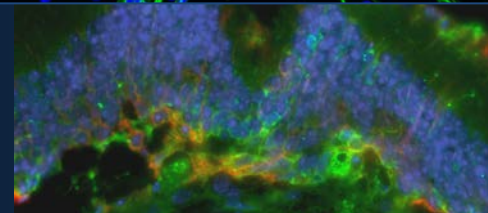
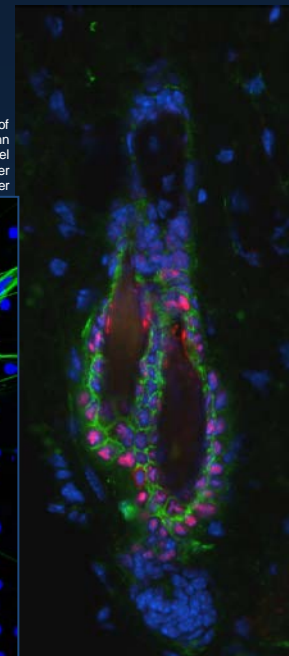
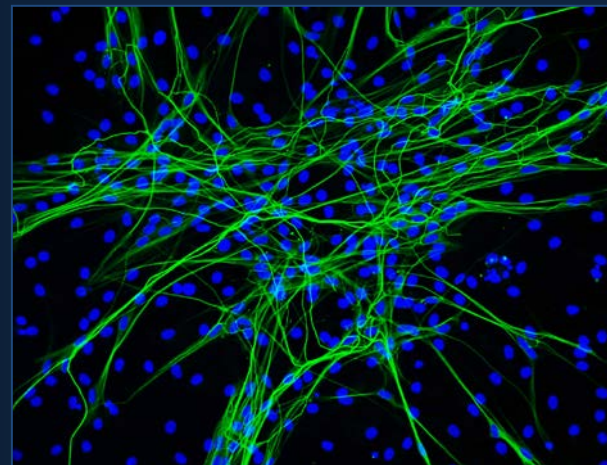
Think Possible



Our special thanks go to all the speakers for their contribution to the scientific success of this meeting and to the Burggemeinde *Bern* as well as BioTek Instruments GmbH and Sysmex Swiss AG for financial support.

The SCRM Steering Committee

Courtesy laboratories of  
V. Enzmann  
S. Kleinlogel  
E.J. Müller  
H.R. Widmer



### Organizers

#### Neuroscience Cluster – Medical Faculty

PD Dr. Volker Enzmann  
Prof. Hans Ruedi Widmer  
Dr. Stefano di Santo

#### Nuclear Medicine

Prof. Thomas Krause

#### DermFocus – Vetsuisse Faculty/Inselspital

Prof. Eliane J. Müller  
Prof. Emeritus André Haeberli  
Prof. Emeritus Tom Seebeck

Honorary Senator Walter Inäbnit, Haag-Streit Holding

## Program

# SCRM Annual Meeting : new horizons

## SCRM Platform, University of Bern

November 21<sup>st</sup> 2014

Haus der Universität, Schlösslistrasse 5, Bern

## Program

- 12h30-13h00**      **Registration and welcome coffee**
- 13h00-14h00**      **Welcome**  
**Prof. Eliane J. Müller**, Vetsuisse Faculty / Insel University Hospital
- State of the Art**  
**Dr. Roberto Iacone**  
 Neuroscience, Ophthalmology and Rare Diseases (NORD)  
 F. Hoffmann-La Roche AG and Basel Stem Cell Network  
*The Use and Promise of Stem Cell Research in Drug Discovery*
- 14h00-16h00**      **SCRM Research Foci Presentations**
- 14h00-14h30      **Cell Signaling**  
**Prof. Eliane J. Müller**  
 Molecular Dermatology, Vetsuisse Faculty / Insel University Hospital  
*The desmosomal cadherin - Wnt connection in epidermal stem cells*
- 14h30-15h00      **Coffee break**
- 15h00-15h30      **Guest lecturer: Physical Biology**  
**Dr. Felix Scholkmann**  
 Biomedical Optics Research Laboratory, University Hospital Zürich  
*The significance of bioelectric factors in controlling stem cell functions*
- 15h30-1600      **Neuroscience**  
**Dr. Marta Roccio**  
 Audiology, DCF, Medical Faculty  
*Cell cycle re-entry of dormant cochlear stem cells*

- 16h00-17h00**      **Panel discussion**  
**Steering Committee and Speakers**
- Proposed Research Foci  
 Yearly Activities  
 Long-term Aims  
 Future directions  
 New Ideas and Visions
- 17h00-18h00**      **Networking Apéro**

We gratefully acknowledge sponsoring from



Burgergemeinde  
Bern

Think Possible

 BioTek

 sysmex